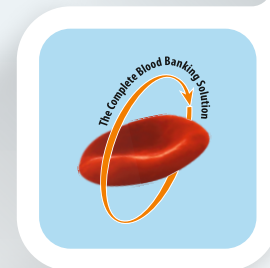




Blood Bank Refrigerators





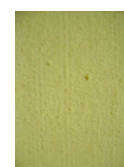
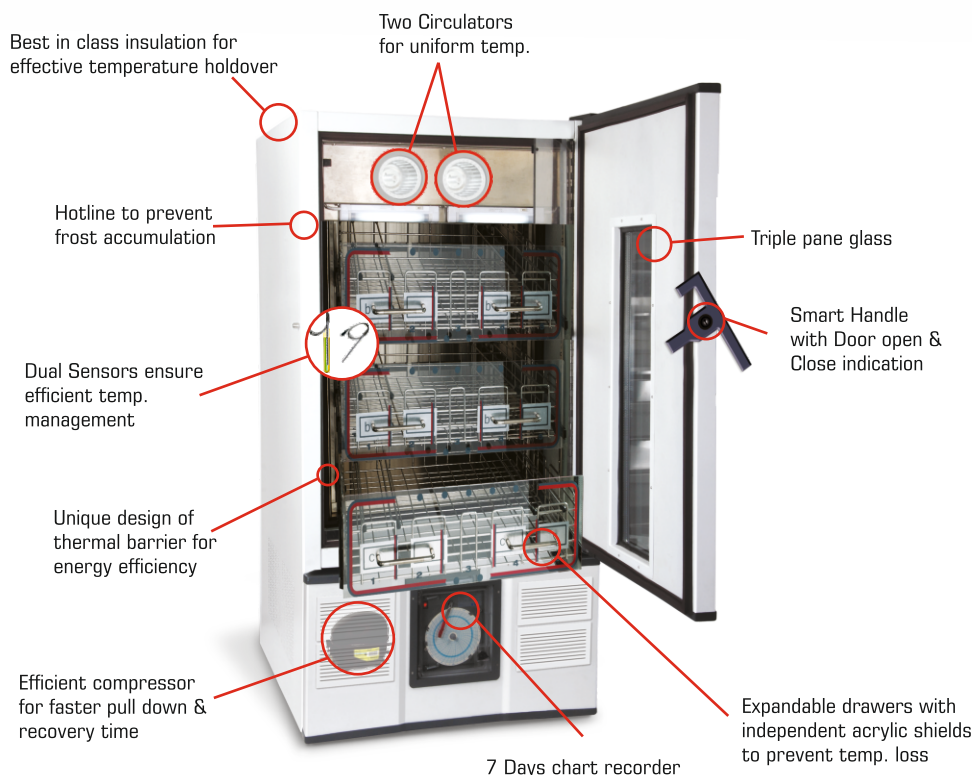
Blood Bank Refrigerators

REMI Blood Storage Refrigerators are specially designed to meet the storage requirements of whole Blood & Packed Red cells.

Cabinet Construction: Durable, corrosion resistant materials are used to provide years of reliable performance. The outer body is made up of powder Coated CRCA Steel & internal cabinet of Stainless Steel 304 (AISI Grade, Non Corrosive and Non Magnetic). The unit is fitted with heavy duty castor wheels for ease of movement.

Temperature Control & Monitoring: Microprocessor integrated system provides excellent temperature accuracy. 7 days circular chart recorder & audio visual alarm system helps to indicate storage conditions continuously.

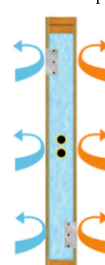
Variants: REMI Blood Storage Refrigerators are available as BR & BR Ultra variants. Both the variants available in different capacities ranging from 72 bags to 400 bags capacity. Also higher capacity variants available for blood centers handling larger volumes.



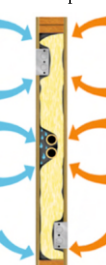
Uniform PUF

Non-Uniform PUF

No Air Gap



Air Gaps



No Gaps & No Open air pockets
 - Avoids loss of Temp.
 - Avoids Moisture Accumulation
 - Nullify impact of temp. & time on PUF quality



Blood Bank Refrigerators

Salient Features :

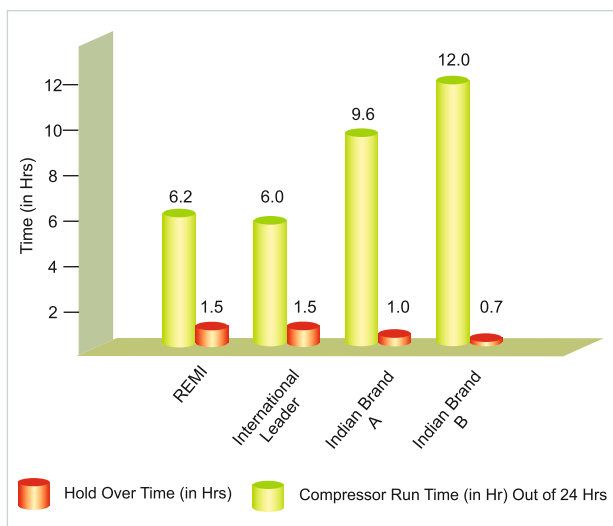
- Auto defrost mechanism to prevent frost formation
- Self-diagnosis & display of errors
- Safety thermostat for avoiding negative temperature
- Triple pane glass to prevent temperature loss
- Settable parameters for
 - Temperature set point
 - High / low temperature alarm point
 - Buzzer off time
- Audio / Visual alarms for
 - Temperature high / low
 - Power failure
 - Sensor open / Short
 - Door Open
 - Compressor on
 - Power on
- Compatibility with REMI XS for wireless data logging



7" Touch Screen
(in Ultra Model)



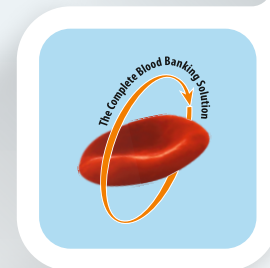
Compressor Functioning & Holdover Time (Best in Class Insulation)



* Data on file

Touch Screen Display

- 7" Multicolored touch screen with user interface
- Displays temp, alarms, date & time
- Data logging with multiple option & transfer via Ethernet, USB port
- PLC (Programmable logic controller) with internal memory of 1500 records
- Battery backup for display, alarms & off-line data logging
- Password protected settings for system control & notifications
- Onscreen access for data logs, temperature graph, system status, troubleshooting, etc.
- REMI 'Datasoft' software for generating various reports, SMS alerts & analysis (Optional)



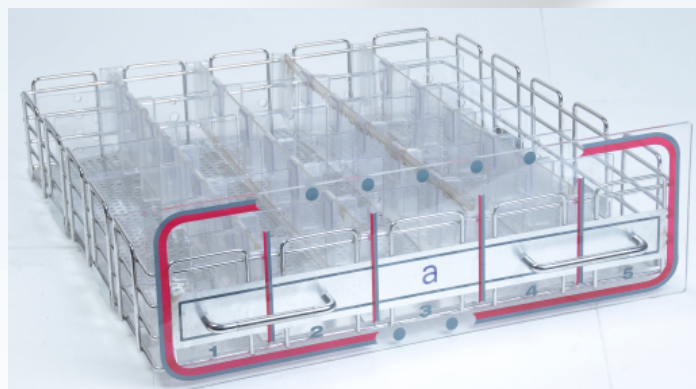
Blood Bank Refrigerators



- **Clever-Chip** (Ultra Model)
 - Provides crucial backup to maintain temperature in event of sensor failure



- Door close with **green** light indication
- Key Lock
- Control inner light
- Door open with **red** light indication



Flexi-Storage (optional)
Modular acrylic partitions to store blood bags upright

Technical Specifications

Particulars	BR 50	BR 120	BR 120 Ultra	BR 180	BR 180 Ultra	BR 240	BR 240 Ultra	BR 300	BR 300 Ultra
Temperature control	Microprocessor	Microprocessor		Microprocessor		Microprocessor		Microprocessor	
Display	LED	LED	7" Touch Screen	LED	7" Touch Screen	LED	7" Touch Screen	LED	7" Touch Screen
Internal dimensions W x D x H (mm)	540 x 520 x 560	660 x 765 x 650		660 x 765 x 850		660 x 765 x 1050		660 x 765 x 1250	
External dimensions W x D x H (mm)	640 x 685 x 1185	800 x 945 x 1205		800 x 945 x 1435		800 x 945 x 1635		800 x 945 x 1835	
Capacity (Liters)	158	330		430		530		630	
Capacity of blood bags (Approx.)	Up to 72	Up to 150		Up to 250		Up to 325		Up to 400	
Number of drawers	2	2		3		4		5	
Temperature	Preset at 4°C ± 0.5°C								
Temperature alarm	≥ 6°C & < 2°C, Audio visual alarm								
Internal body material	Stainless Steel 304 (AISI grade, Non corrosive, Non magnetic)								
External body material	Powder coated CRCA steel								
Insulation	50mm	80 mm on body, 100 mm on Door, CFC free polyurethane foam							
Illumination	Fluorescent Lamp								
Recorder	Seven days circular chart recorder								
Noise level	Less than 65 db (A)								
Battery backup (Controller)	Rechargeable, maintenance free battery for Display, Alarm system & Chart recorder								
Recommended voltage stabilizer	VS 01	VS 02				VS 03			
Electrical	220-240 volts, 50 Hz, Single Phase								
Compliance	EN 60601-1,EN 60601-1-2, CE, US FDA								