

Ultra Low Freezers -86°C

REMI's new range of ultra-low deep freezer is specially designed for faster temperature pull down & optimized cryopreservation. Highly sensitive microprocessor control ensures precise temperature management at -86°C



Flexibility to select from 3 available capacities

Salient Features :

- Efficient insulation with high core density reduces temperature loss
- Optimized compressor run ensures energy efficiency
- Hot line across the door assembly to prevent frost formation
- Efficient dual cascade refrigeration system ensures fast temperature pull down
- Triplicate step silicon rubber gasket for complete insulation
- Independent internal foamed doors
- Seven day circular chart recorder for temperature recording
- Audio visual alarms for
 - Temperature high / low
 - Power failure (only visual)
 - Door open
 - Compressor on (only visual)
 - Power on (only visual)
- Settable points of
 - Temperature high / low
 - Adjustable temperature range
 - High / low temperature alarm point
- Smart Handle :
 - Indication of door close with green light
 - Key lock & controls inner light
 - Indication of door open with blinking red
- Clever Chip : Provides crucial backup to maintain temperature in event of sensor failure
- Port of CO₂ backup (Optional)
- Compatibility with **REMI XS** for wireless data logging

Ultra Low Freezers -86°C



Touch Screen Display

- 7" Multicolored touch screen with user interface
- Displays temp, alarms, date & time
- Data logging with multiple option & transfer via Ethernet, USB port
- PLC (Programmable logic controller) with internal memory of 1500 records
- Battery backup for display, alarms & off-line data logging
- Password protected settings for system control & notifications
- Onscreen access for data logs, temperature graph, system status, troubleshooting, etc.
- REMI 'Datasoft' software for generating various reports, SMS alerts & analysis (Optional)

Technical Specifications

Parameters	PDV 90 Ultra	PDV 185 Ultra	PDV 360 Ultra
Internal Volume (Liters)	90	185	360
No of plasma bags	150	300	550
No. of trays	2	3	6
No. of Internal door	2	2	4
Internal dimensions W x D x H (mm)	400 x 400 x 580	510 x 510 x 730	700 x 510 x 1000
External dimensions W x D x H (mm)	710 x 877 x 1410	820 x 987 x 1560	1010 x 987 x 1830
Minimum temperature (in AC room)	-86°C		
Insulation (CFC free polyurethane foam)	Body : 155 mm sides, 325 mm Back, Door : 110 mm		
Temperature control	Microprocessor with PT-100 sensor		
Display	7" Touch Screen		
Door open alarm	Audio visual alarm in case door open for over one minute		
Chart recorder	In-built 7 days circular chart recorder		
Internal body material	S.S. 304 (AISI Grade, non corrosive, non magnetic)		
External body material	Powder coated CRCA steel		
Noise level	Less Than 65 db(A)		
Battery backup	Rechargeable, Back Up 8 hrs (for alarm system & temperature recorder)		
Recommended voltage stabilizer	VS 05	VS 06	
Electrical	220-240 volts, 50 Hz, Single Phase		

Ultra Low Freezers -86°C

REMI's new range of ultra-low deep freezer is specially designed for faster temperature pull down & optimized cryopreservation. Highly sensitive microprocessor control ensures precise temperature management at -86°C

Salient Features :

- Efficient insulation with high core density reduces temperature loss
- Optimized compressor run ensures energy efficiency
- Hot line across the door assembly to prevent frost formation
- Efficient dual cascade refrigeration system ensures fast temperature pull down
- Triplicate step silicon rubber gasket for complete insulation
- Independent internal foamed doors
- Seven day circular chart recorder for temperature recording
- Port for CO₂ backup (Optional)
- Audio visual alarms for
 - Temperature high / low
 - Power failure (only visual)
 - Door open
 - Compressor on (only visual)
 - Power on (only visual)
- Settable points of
 - Temperature high / low
 - Adjustable temperature range
 - High / low temperature alarm point



PDV-490 Ultra

Technical Specifications

Parameters	PDV-390 Ultra	PDV-490 Ultra	PDV-650 Ultra
Internal Volume (Liters)	390	490	650
No of plasma bags	550	650	800
No. of trays	4	4	4
No. of Internal door	3	3	3
Internal dimensions W x D x H (mm)	589 x 505 x 1310	589 x 637 x 1310	780 x 637 x 1310
External dimensions W x D x H (mm)	909 x 797 x 1990	900 x 929 x 1990	1091 x 929 x 1990
Minimum temperature (in AC room)	-86°C		
Insulation (CFC free polyurethane foam)	126mm		
Temperature control	Microprocessor with PT-100 sensor		
Display	7" Touch Screen		
Door open alarm	Audio visual alarm in case door open for over one minute		
Chart recorder	In-built 7 days circular chart recorder		
Internal body material	S.S. 304 (AISI Grade, non corrosive, non magnetic)		
External body material	Powder coated CRCA steel		
Noise level	Less Than 65 db(A)		
Battery backup	Rechargeable, Back Up 8 hrs (for alarm system & temperature recorder)		
Recommended voltage stabilizer	VS-07		VS-07
Electrical	220-240 volts, 50 Hz, Single Phase		

Ultra Low Freezers -86°C

- 7" Touch screen
- Front USB for data logging
- Vent port enables fast sample access

- Double door
- silent hinge
- Non HCFC polyurethane insulation

- Single hand openable

- Multi layer gasket

- Gasket heating

- Height-adjustable shelves

- Enhanced heat transfer

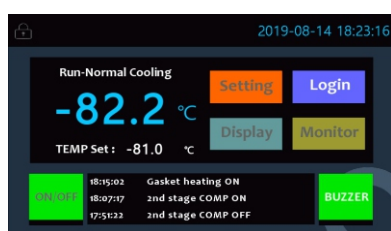
- Cascade refrigeration system

- Easy-clean filter

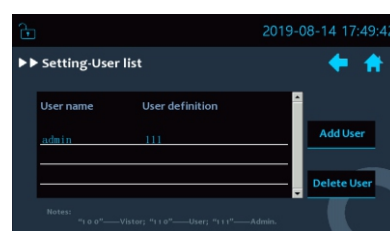
- High efficient oil separate

- Chart Recorder

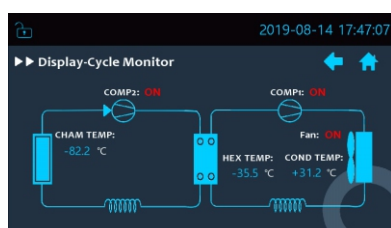
- Leveling caster



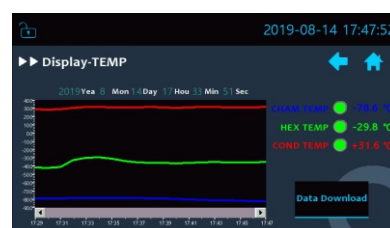
Interface



User List



Cycle Monitor



Data Log